



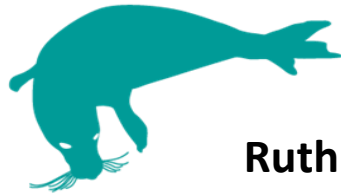
**PANACHE**

Protected Area Network Across  
the Channel Ecosystem

THE ENGLISH CHANNEL  
one  
ecosystem two  
projects

FINAL CONFERENCE - MARCH 17<sup>th</sup>-18<sup>th</sup> 2015 - TORQUAY

# Developing management plans for cetaceans within MPAS.



**Ruth Williams,  
Marine Conservation Manager  
Cornwall Wildlife Trust**



**Cornwall  
Wildlife Trust**

*Protecting Cornwall's wildlife  
and wild places*

[ruth.williams@cornwallwildlifetrust.org.uk](mailto:ruth.williams@cornwallwildlifetrust.org.uk)

# MPAs for cetaceans – Cornwall Wildlife Trusts' work on mobile species

★ What do we know – cetacean data collection (from sightings, acoustics, and strandings.)

🌿 Threats and issues

★ Potential management for their protection :

👣 - MPA's

🐟 - Bycatch mitigation



# MPAs for mobile species...a controversial discussion!







# Seaquest – ad hoc and effort based recording, and acoustic monitoring of our cetaceans







# C-POD



**Acoustic monitoring  
systems full of clever  
software!**

# Marine Strandings Network - Investigating deaths of marine mammals







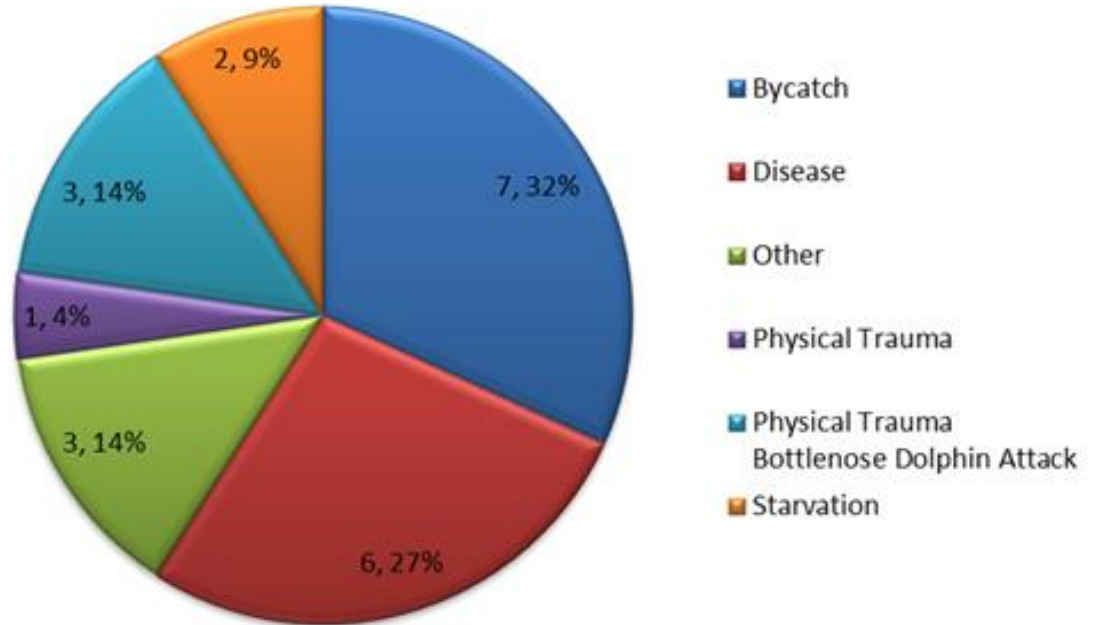
Cornwall Wildlife Trust  
Bycatch Evidence Evaluation  
Project – BEEP:

Encircling marks indicative of  
set net entanglement





# Causes of death 1990-2011 (based on necropsies)



Necropsy data courtesy of CSIP

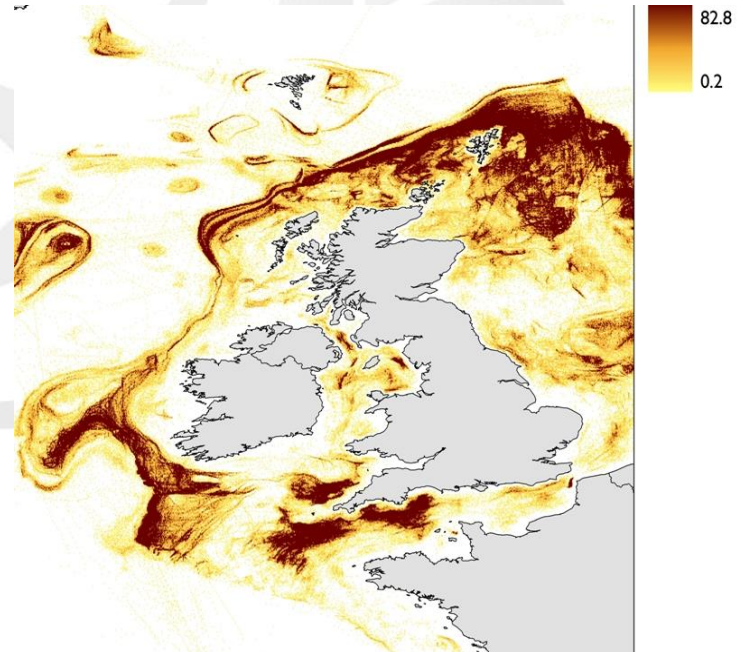


# Threats

- Fishing / bycatch
- Pile driving
- Pollution
- Disturbance
- Habitat degradation

How do we protect against these threats – directly or spatially?

- Mean annual spatial distribution of fisheries activity (2000–2004) derived from VMS records. The colour scale indicates the mean annual number of Vessel Monitoring System derived data points within 9 km<sup>2</sup> pixels (From Witt & Godley, 2007).

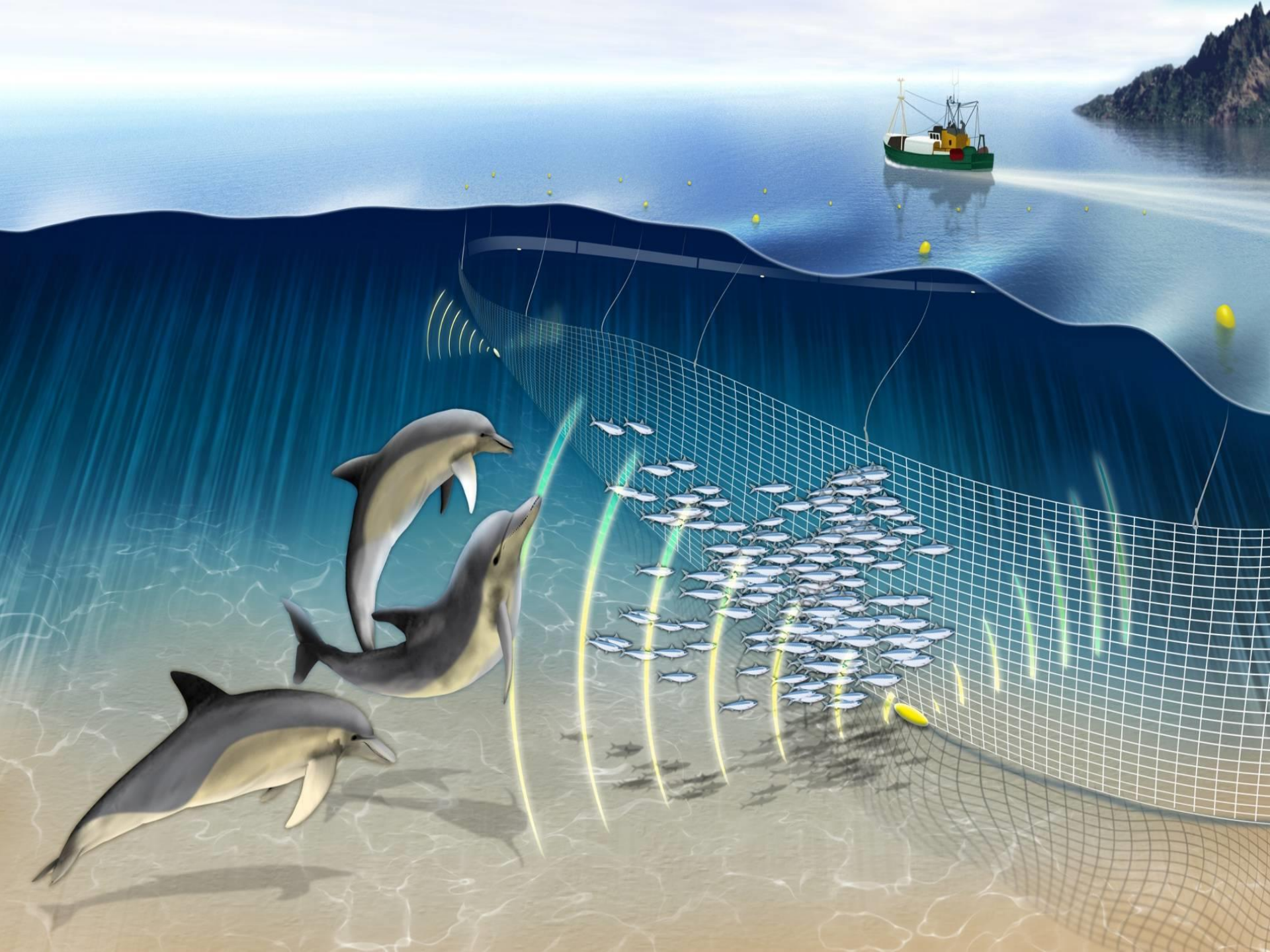


# CWT 'Banana pinger' trials

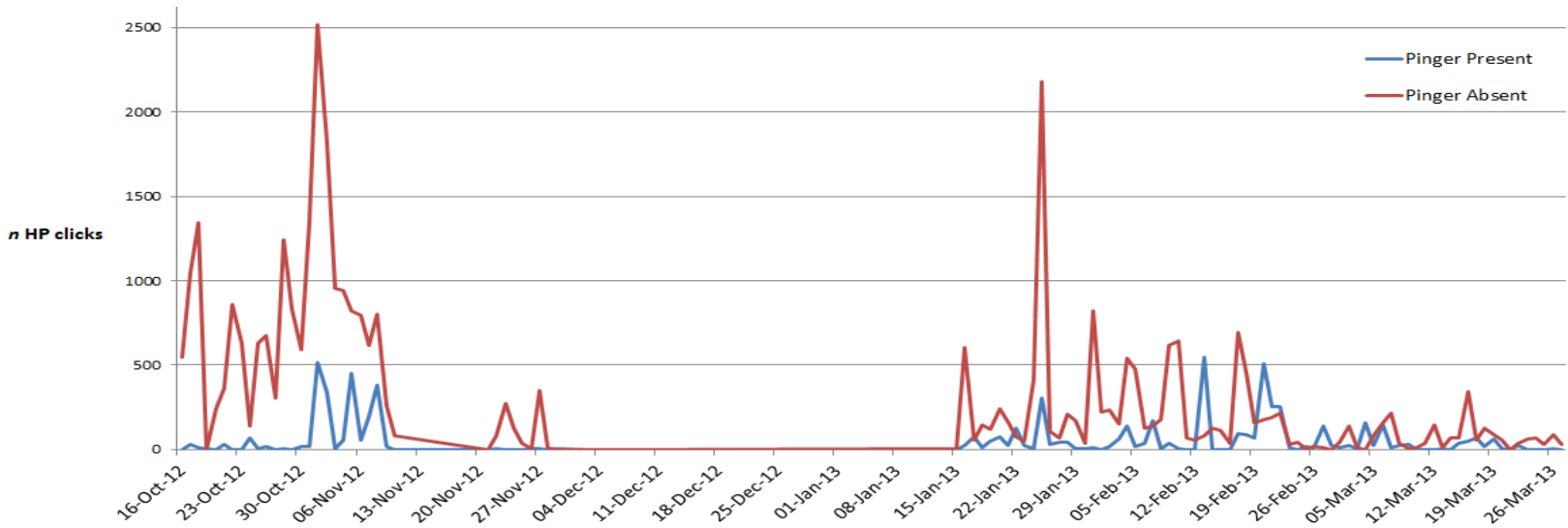
- To reduce accidental entanglement of cetaceans in inshore fishing nets
- **Fishtek Ltd.**, based in Devon, developed the Banana pinger as a direct result of previous work in the Cornish fishery.
- Specifically designed to **meet the EU regulations** on sound frequency and power as well as concentrating on reducing the cost of a unit.







- Results show a lower number of porpoise clicks from nets with pingers present than from nets without pingers.



- An average reduction of porpoise click detections to 18% on pingered nets compared to non-pingered nets.
- This means there is an average **reduction in risk of entanglement of 82%**



- Banana Pinger is practical - suitable for deployment in an inshore set net fishery
- It's effective - shows a strong 'pinger effect' that can be expected to translate into a greatly reduced risk of bycatch.
- No habituation or displacement issues and rapid recolonisation when pinger is off.
- Good battery life and low cost



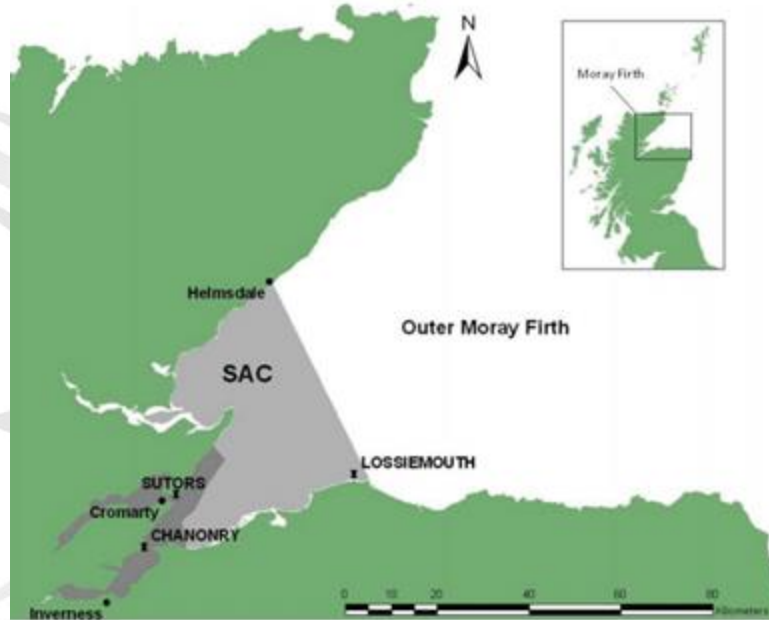
# Can MPAs be used as a tool to protect cetaceans?

- Knowledge of populations is essential
- Species or groups with a known 'home range'
- More mobile species with clear breeding / feeding areas
- Localised threats





# Do designated MPAs work for cetacean protection?



Moray Firth SAC for bottlenose dolphins

# An Ecologically Coherent Network of MPAs?

Shouldn't just include FOCI spp and habitats.



- Should include:
  - - areas supporting particular ecological processes
  - - important for particular life stages or behaviours
  - - highly productive or supports high biodiversity

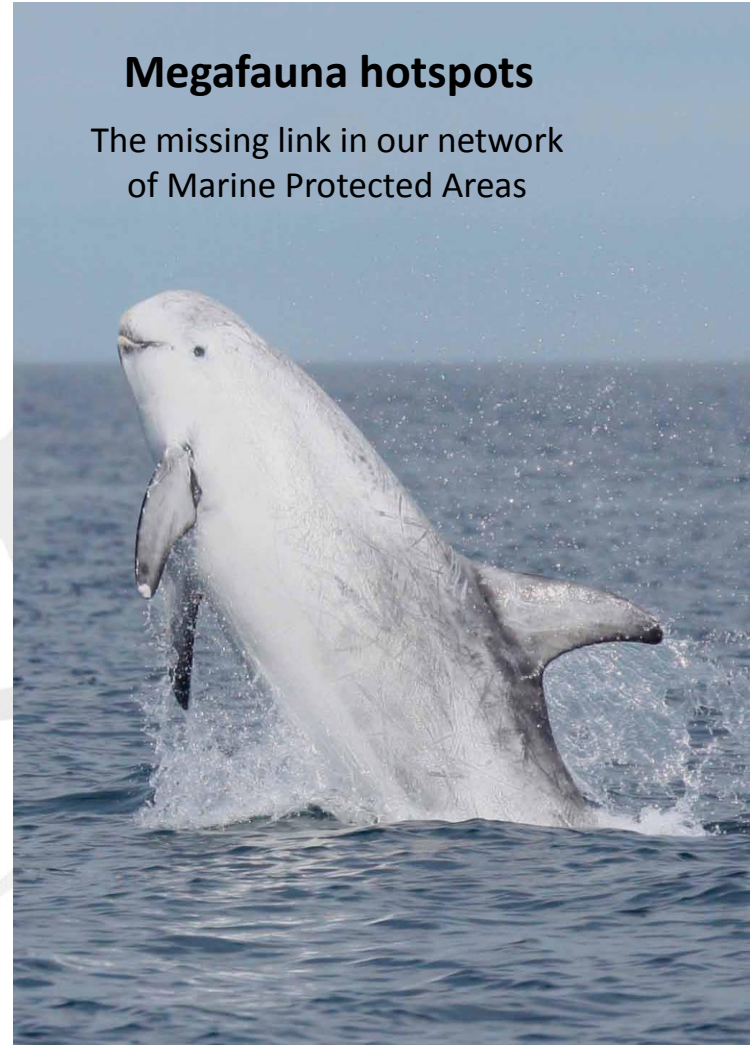


# Ocean Giants campaign

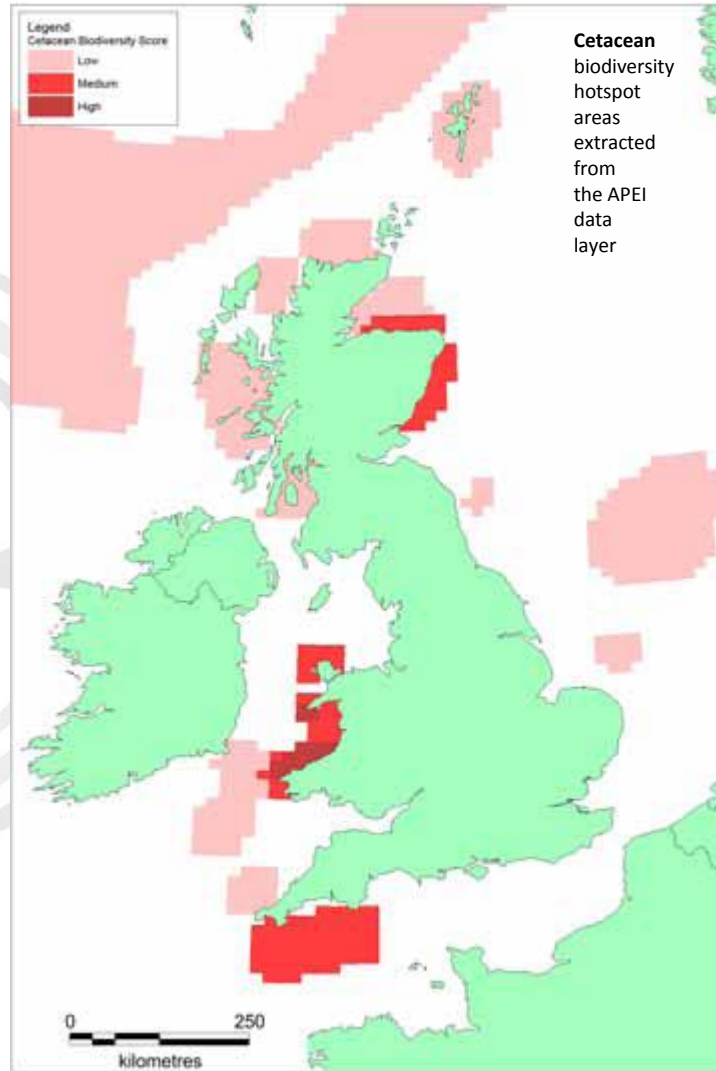
- The Wildlife Trust's Ocean Giants campaign - mobile species to be included as features of MCZs

## Megafauna hotspots

The missing link in our network  
of Marine Protected Areas



# Areas of Pelagic Ecological Importance





# Conclusions....

- Ensure mobile species are included as features in MPAs / MCZs – high productivity / life stages / threats
- Continue monitoring cetacean species distribution and population through visual and acoustic methods and feed into APEI datasets
- Continue to monitor strandings to understand threats and assess CoD – indicator of key issues.
- Pingers to be used on nets set within MPAs where there is high fisheries interactions.

# Thank You!



**Cornwall  
Wildlife Trust**

*Protecting Cornwall's wildlife  
and wild places*

[ruth.williams@cornwallwildlifetrust.org.uk](mailto:ruth.williams@cornwallwildlifetrust.org.uk)



**PANACHE**

Protected Area Network Across  
the Channel Ecosystem



Hampshire & Isle of Wight  
Wildlife Trust  
*Protecting wildlife. Inspiring people.*



**LIVE SUSTAINABLY WITH PLYMOUTH UNIVERSITY MARINE INSTITUTE**



**MARINE & COASTAL POLICY WITH PLYMOUTH UNIVERSITY**

**PML** | Plymouth Marine Laboratory



The VALMER and PANACHE projects were selected under the European cross-border cooperation programme INTERREG IV A France (Channel) - England, co-funded by the ERDF.