

How Ecosystem Services Assessments can support marine and coastal governance



Dr Wendy Dodds

Co-authors: Manuelle Philippe, Laura A. Friedrich
Gillian Glegg, Stephen Fletcher & Denis Bailly

Acknowledgements: VALMER case study team
members & stakeholders



Overview

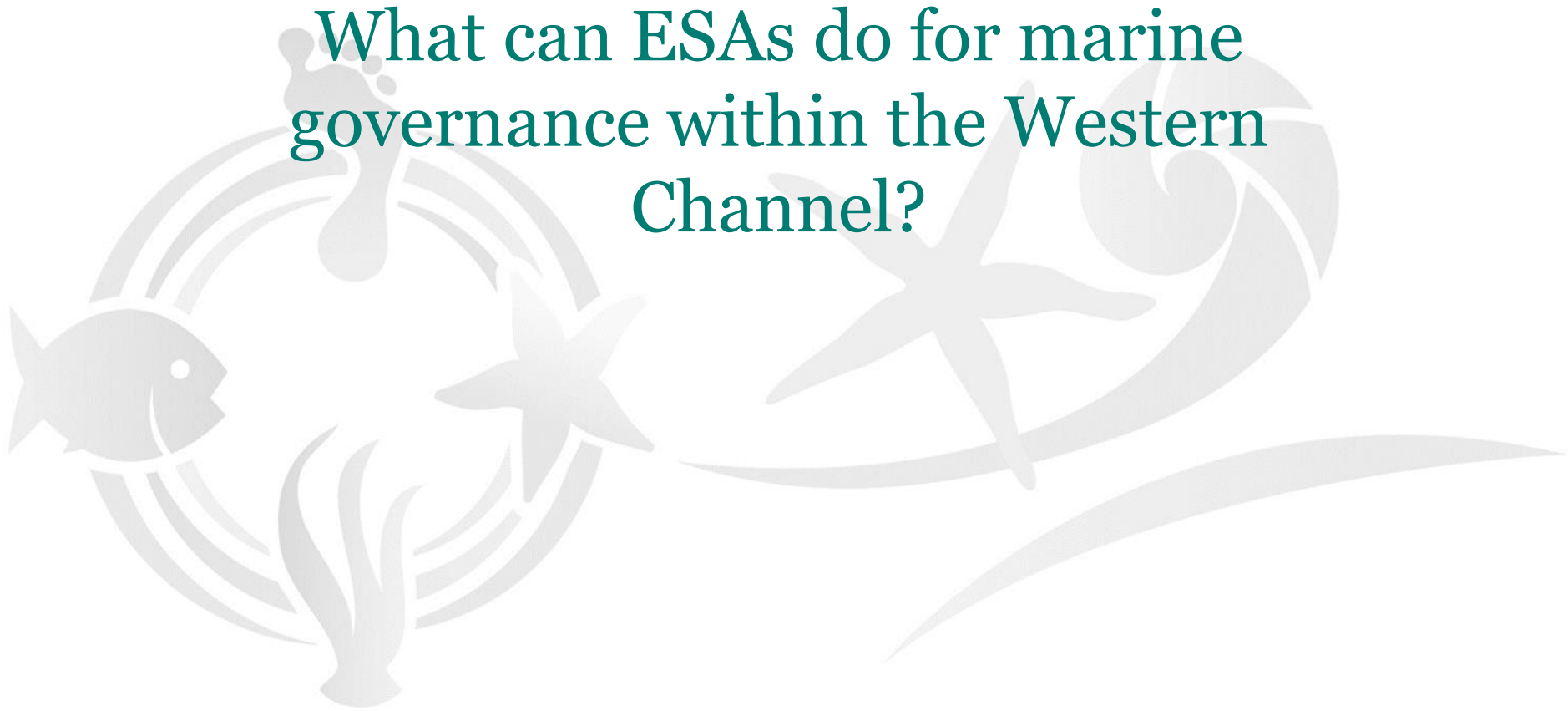
- Context
 - Introduction
 - Governance Research
 - Findings
 - Conclusions
 - Outputs
- 

Context

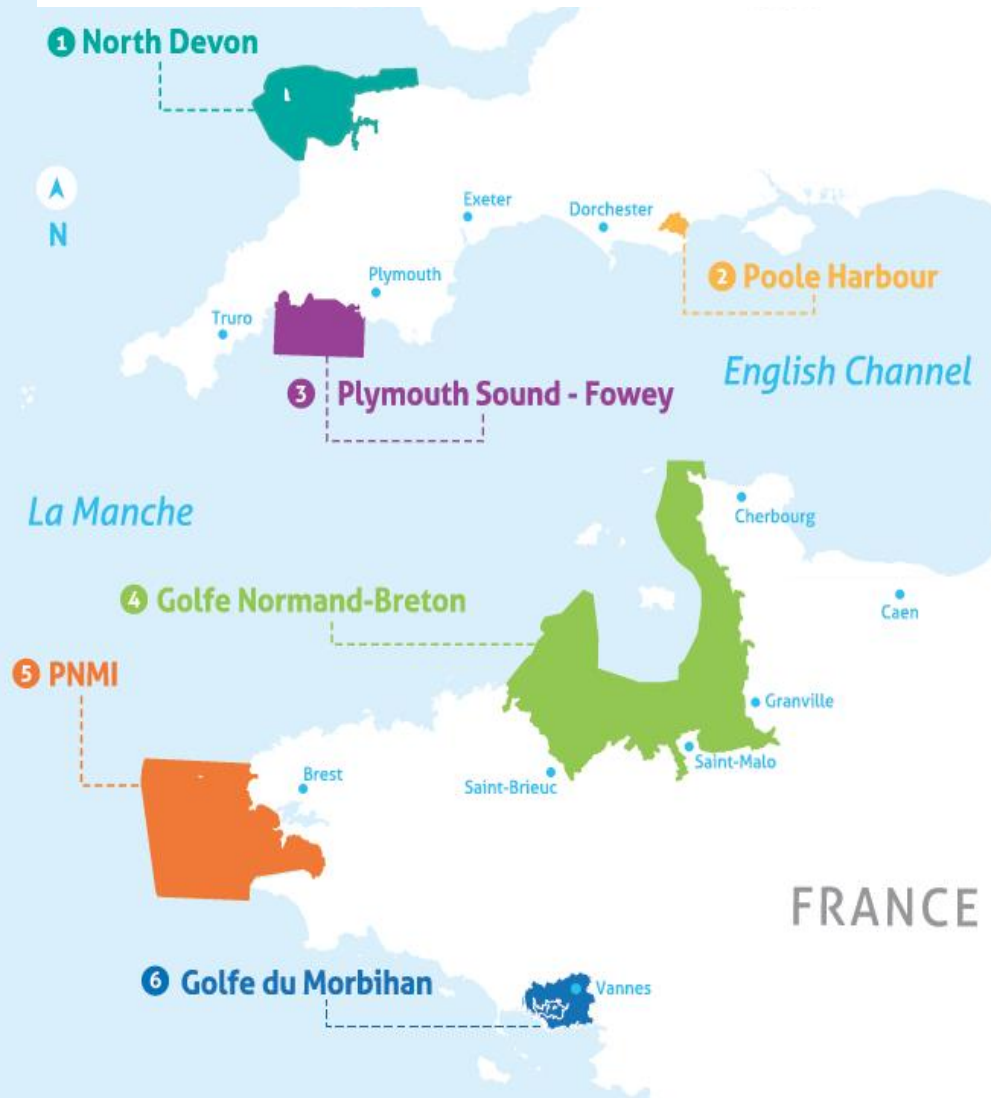
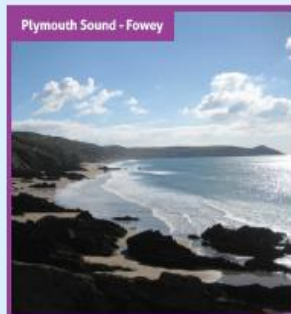
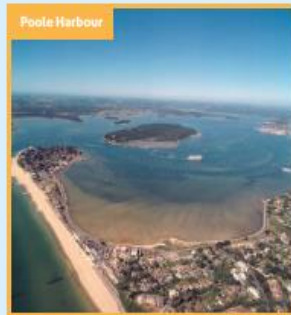
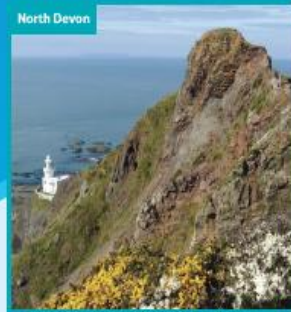
- Ecosystem-based management & marine policy
 - Ecosystem Services Approach
 - Ecosystem Service Assessments (ESA)
- 

Introduction

What can ESAs do for marine governance within the Western Channel?

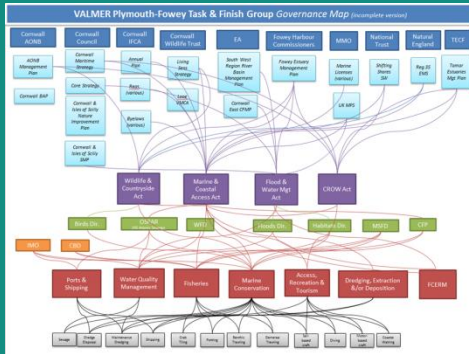


Six collaborative interdisciplinary teams & stakeholders developed site-specific marine ESAs. Each with site coordinators.



Governance Research

- Evaluation Framework designed & implemented across the sites
- Looked at VALMER process & outcomes/outputs
- Over 50 interviews conducted
 - wealth of feedback & insight into how ESA can be used



Governance Framework Analysis

- Each case study site & wider project area



Site Coordinators

- Exploring case study coordinator experiences
 - Interviewed twice-before and after the scenario building exercises

15 interviews across the six sites



Stakeholders

- Exploring individual stakeholder
 - 2 'before and after' surveys (self assessment)
 - Interviews

39 stakeholders across the six sites

Contribution to practice:

*Evidence of application.
Feedback from stakeholders.
Lessons learnt & advice for managers.*

Contribution to theory:

*Testing the literature-
confirming,
contesting & new
discoveries.*

Documented categories uses of ESA in marine & coastal governance:

- 1) **Informative use:** to support policy and decision making in general
- 2) **Decisive use:** to inform a specific decision, legislation, regulation, project, etc.
- 3) **Technical use:** to design economic instruments, e.g. fees, taxes



Adapted from: Pascal et al. 2012 and Laurans et al. 2013

Findings

- VALMER confirmed expectations
 - ESA versatile tool for managers in EU marine context
 - Stakeholder support ...
- 

Strong UK and French stakeholder support for the use of ESA

ESA can help:



Don't
know



Disagree



Neutral



Agree

Findings

Many opportunities for integrating marine ecosystem services considerations within existing management processes:

→ *Planning phases*

→ *Implementation*

→ *Monitoring and Evaluation*

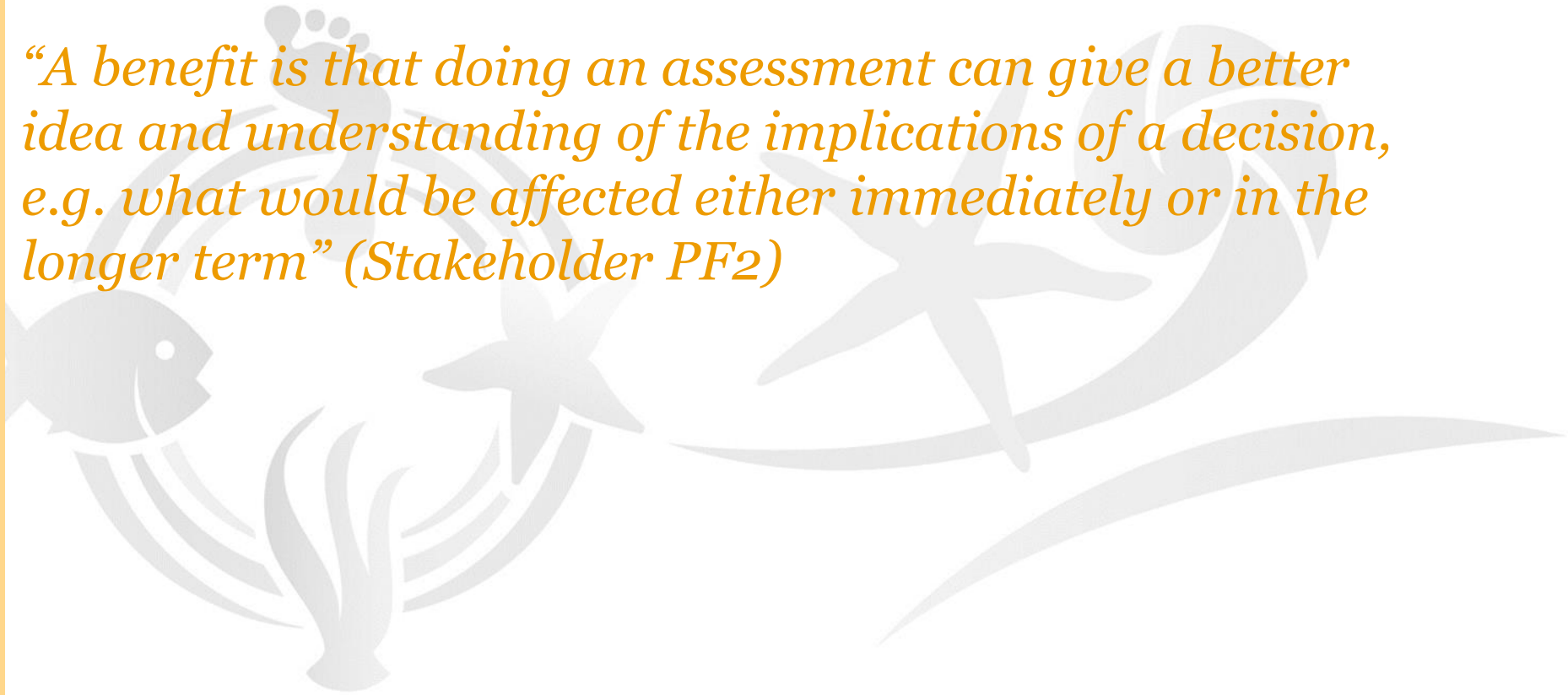
→ **ESA in planning phases**

ESA can support the planning phases of marine and coastal management

- by increasing the understanding of marine ecosystem services
- integrating ecological knowledge and social values
- supporting the exploration of management options & their socio-ecological implications
- helping anticipate future changes

Baseline ESA and the recalculated ESA values for the scenarios allowed stakeholders consider future impacts of decisions that they may not have been aware:

“A benefit is that doing an assessment can give a better idea and understanding of the implications of a decision, e.g. what would be affected either immediately or in the longer term” (Stakeholder PF2)






ESA in implementation

ESA can support the implementation of marine and coastal management

- creating an ecosystems view & connecting people to nature
- developing capacity of stakeholders to engage in marine governance
- encouraging support and justification for marine policy, e.g....

The ESA & the case study process raised awareness of seagrass habitats in the Gulf, the services they provide, the interactions between seagrass and different users & the need for management.

“the approach is more appropriate for communicating with a wider public and makes it more likely to gain the support of those stakeholders that will be affected by the regulation/restrictions...it provides arguments to justify management measures” (Stakeholder GDM 7)





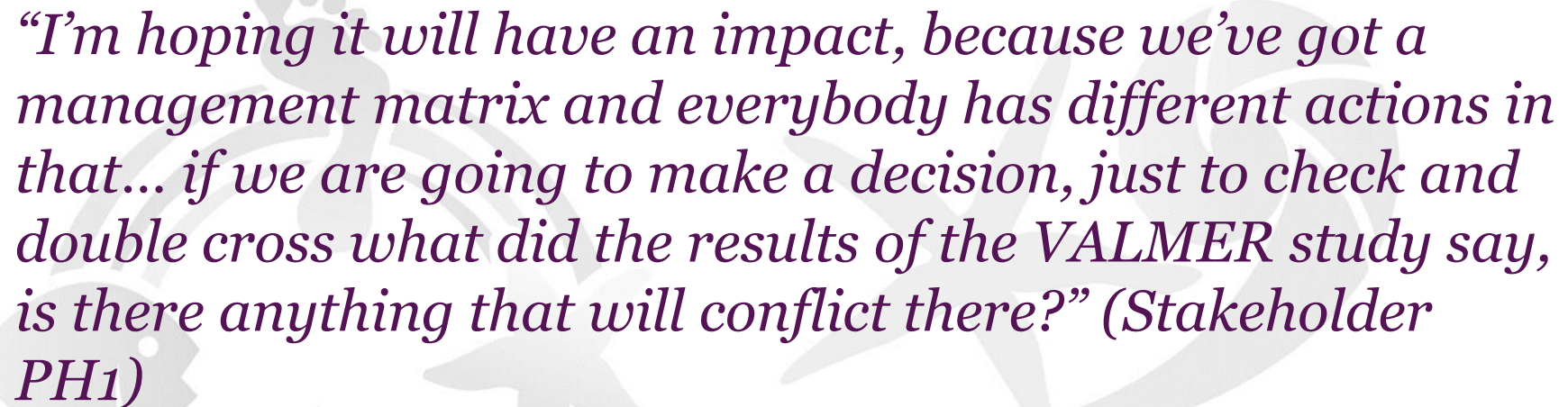
ESA in Monitoring & Evaluation

ESA can support the M&E of marine and coastal management

- generating locally relevant data on marine ecosystem services, including values such as monetary valuations and cultural values
- establishing and analysing existing conditions and baselines to supporting site monitoring
- reviewing management effort and being adaptive to changes in intensity and spatial extent of activities site, e.g....

ESA results will support the review of the Poole Harbour Aquatic Management Plan. This strategy acts as the management scheme for the European Marine Site.


“I’m hoping it will have an impact, because we’ve got a management matrix and everybody has different actions in that... if we are going to make a decision, just to check and double cross what did the results of the VALMER study say, is there anything that will conflict there?” (Stakeholder PH1)



Conclusions

- Ecosystem Services Approach & ESAs add benefit to marine governance
 - Technical & societal challenges remain
 - Co-production of ESAs...
- 

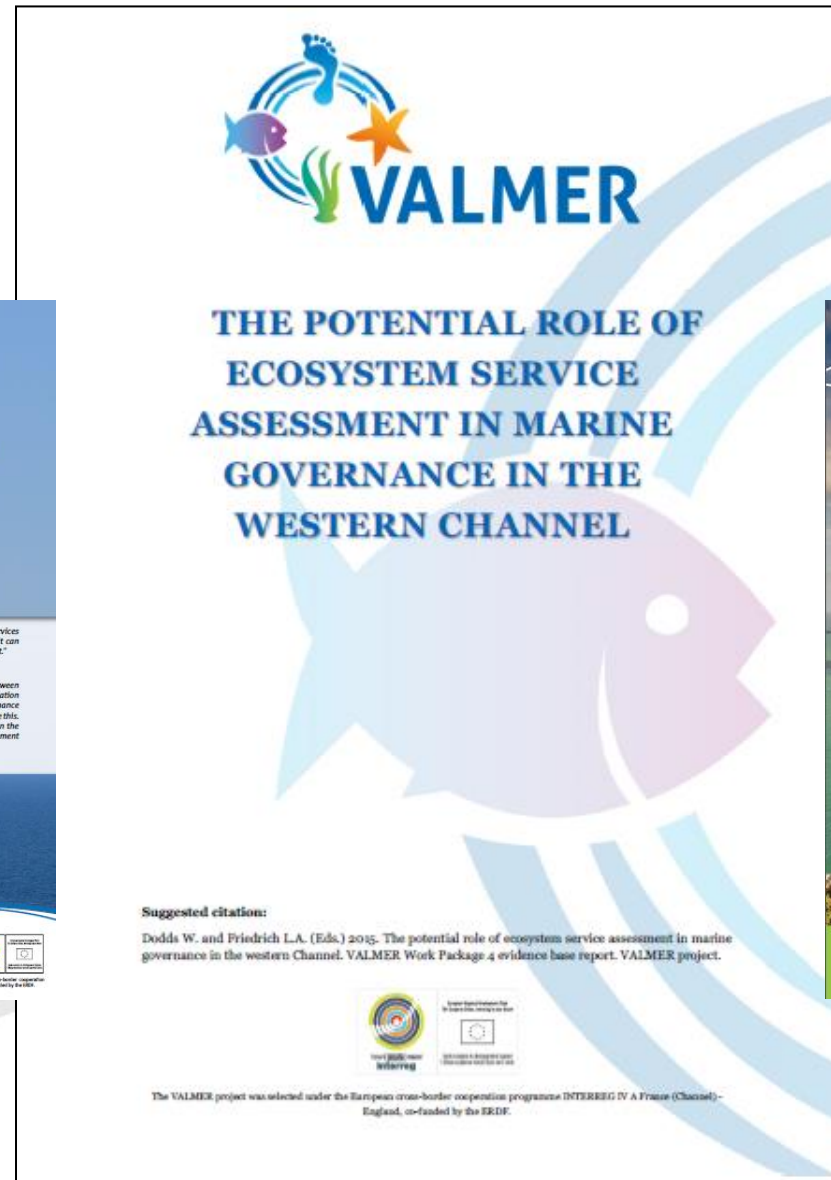
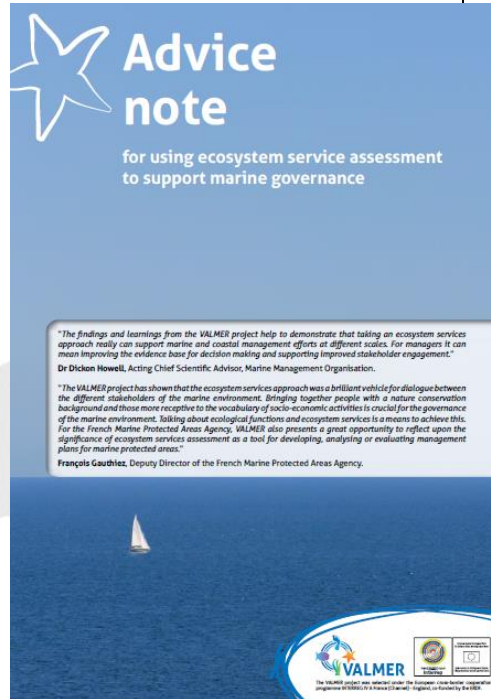
ESA co-production - an effective way of:

- raising managers knowledge of the provision of marine ecosystem services
 - understanding the ecological & socio-economic implications of decisions
 - increasing capacity for using assessment & valuation frameworks
 - increasing policy influence of ESA
- 

Final Reflections

Marine and coastal areas as socio-ecological systems







PANACHE

Protected Area Network Across
the Channel Ecosystem



Hampshire & Isle of Wight
Wildlife Trust
Protecting wildlife. Inspiring people.



LIVE
SUSTAINABLY
WITH
PLYMOUTH
UNIVERSITY
MARINE INSTITUTE



**MARINE &
COASTAL POLICY
WITH
PLYMOUTH
UNIVERSITY**

PML | Plymouth Marine
Laboratory



The VALMER and PANACHE projects were selected under the European cross-border cooperation programme INTERREG IV A France (Channel) - England, co-funded by the ERDF.