



PANACHE

Protected Area Network Across
the Channel Ecosystem

THE ENGLISH CHANNEL
one
ecosystem two
projects

FINAL CONFERENCE - MARCH 17th-18th 2015 - TORQUAY

VALMER: Plymouth Sound to Fowey Case Study



Outline Approach

- Representative 30km stretch of Cornish coast
- Inshore/offshore
- Broadscale approach to Ecosystem Service assessment



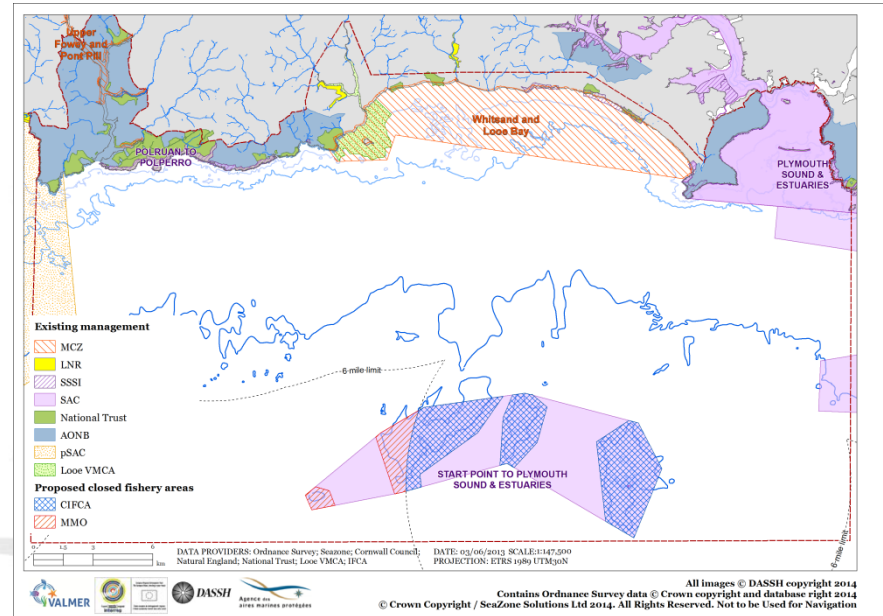
Stakeholder participation

- No pre-existing management structure
- Created a VALMER Task and Finish Group of marine and coastal managers and regulators
- 4 stakeholder workshops



Scenario building process

- Phase 1 – visualising the case study
- Phase 2 – identifying drivers for change
- Phase 3 – agreeing on the scenario focus
- Phase 4 – developing scenarios with stakeholders
- Phase 5 – using scenarios to support/influence management



Aims

Possible actions to deliver Cornwall Maritime Strategy in Plymouth Sound-Fowey area

In our control

Enablers

Tangible effects on Ecosystem Services

Barriers

actions

actions

actions

actions

actions

Beyond our control

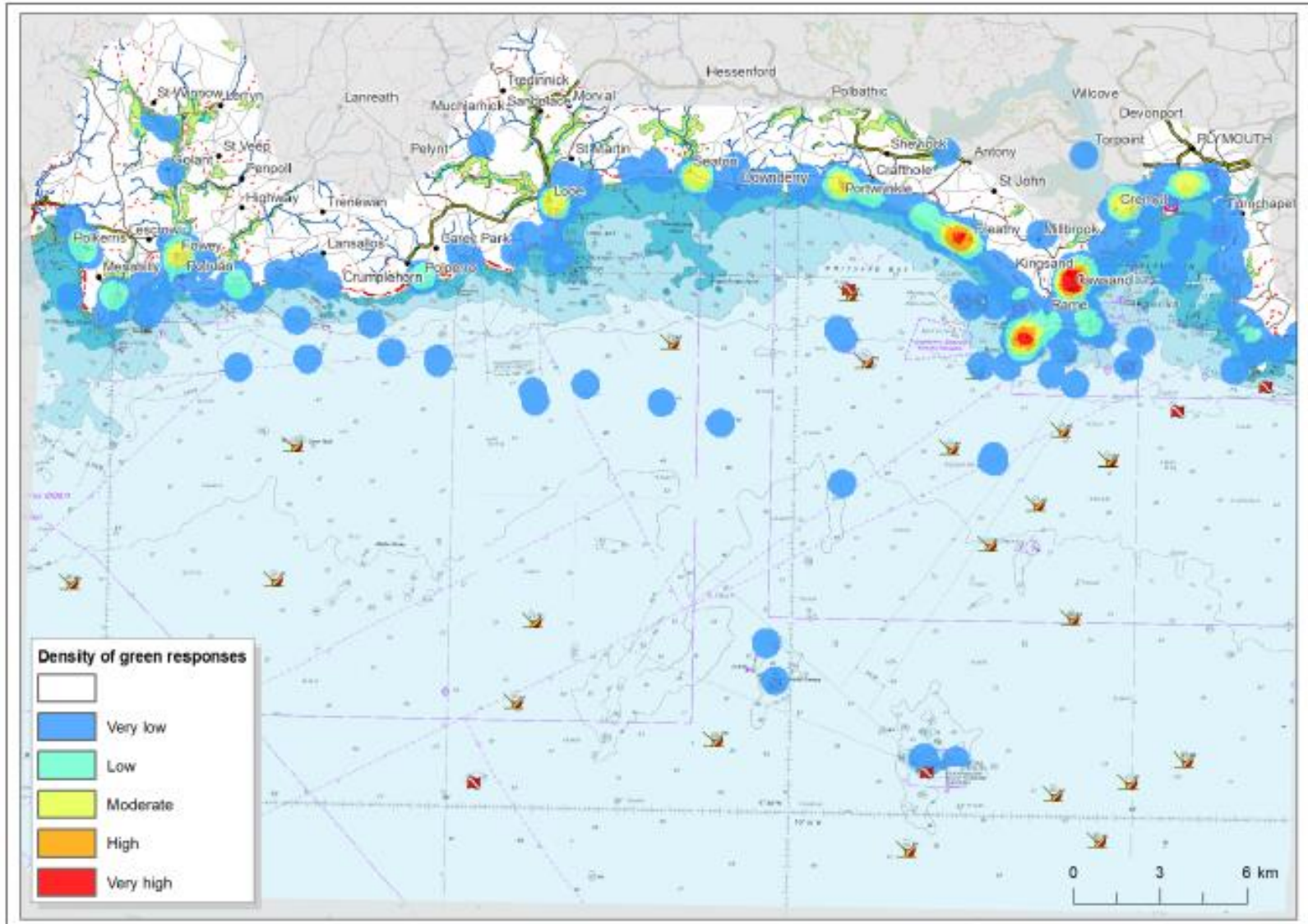
Actions amalgamated into three scenarios

Dredge Disposal: Relocation of disposal sites further offshore

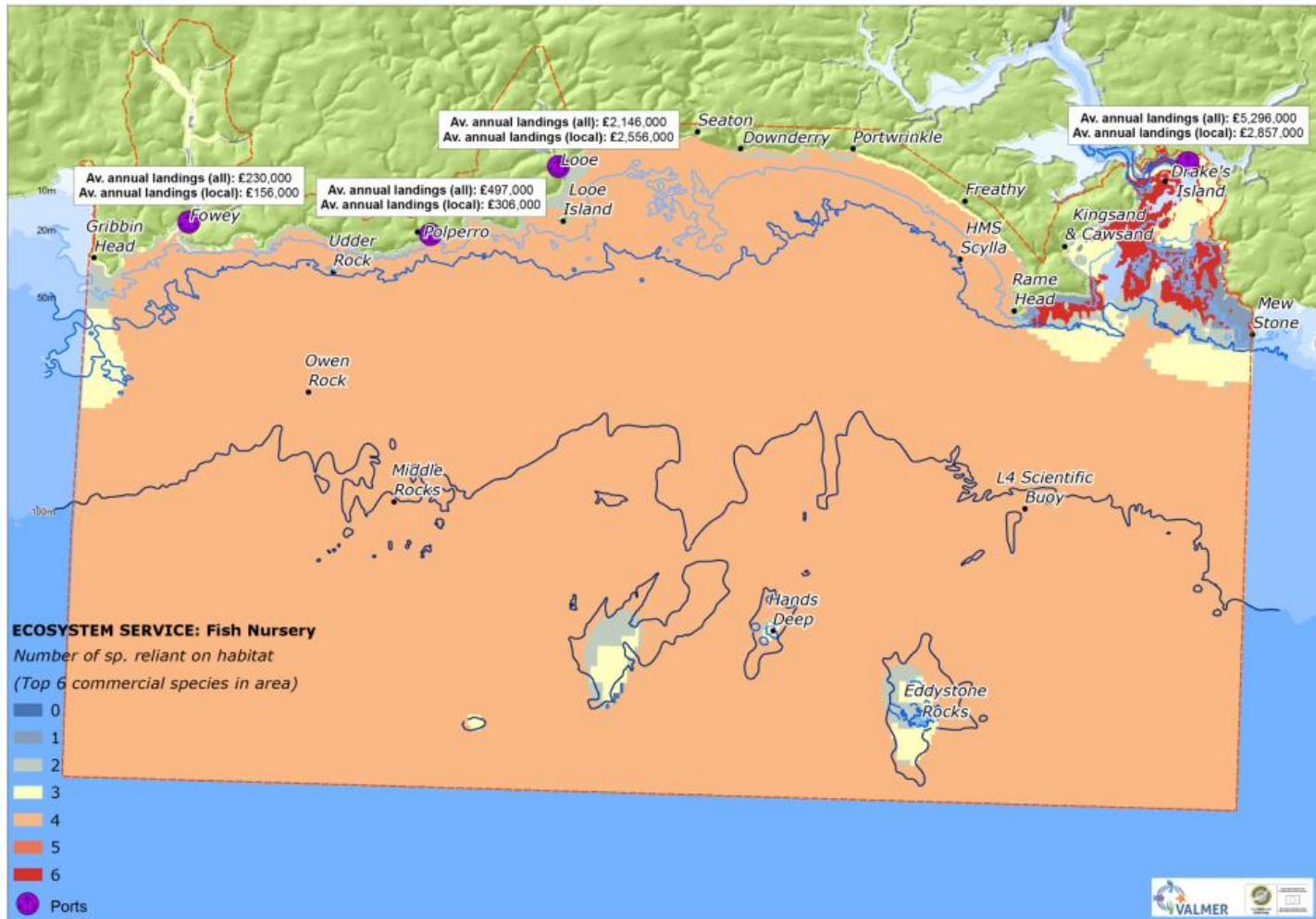
Marine Protected Areas: Introduction of some highly protected MPAs

Recreational Boating: Replacing swing moorings with eco-moorings

Baseline ESA: Cultural Ecosystem Services- density of significant and valuable places



Baseline Ecosystem Service Assessment: Fish Nursery



Marine Protected Area Scenario

Task and Finish Group: hypothetical actions

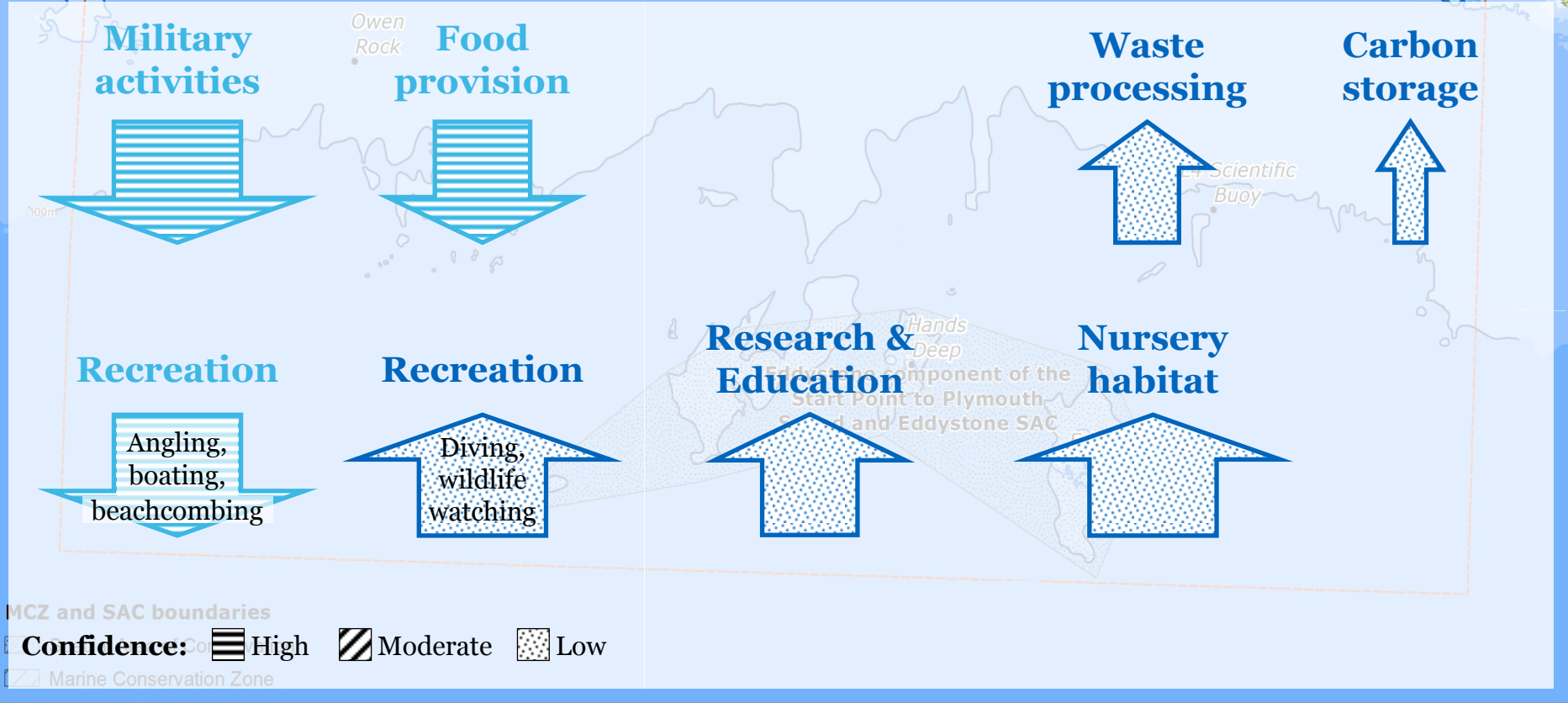
- (Action 2) Introduction of highly protected areas within existing MPAs
- (Action 38) Develop and implement robust management measures for the Whitsand and Looe Bays MCZ
- (Action 41) Improving the conservation value of MCZs

Marine Protected Area Scenario

General Assumptions

- The Eddystone Reef SAC and Whitsand and Looe Bay MCZ become highly protected.
- All extraction and deposition are prevented
- Other damaging activities are controlled.

Ecosystem Services INSIDE the MPAs



Using ESA within decision making; from theory into practice

- VALMER data, mapping and baseline ESA: decision-support tool, for example in the delivery of the Cornwall Maritime Strategy by Cornwall Council
- Recreational boating scenario ESA and spatial data: Fowey Harbour Commissioners -pros and cons of installing eco-moorings
- Dredge disposal site scenario ESA: look at an old problem in a new way
- The MPA scenario ESA: demonstrated the complex trade-offs of any management decisions
- VALMER results: inform strategic decision-making and support tools - Local Nature Partnership and Cornwall Council as part of their Environmental Growth Strategy

Lessons Learnt

- Involve stakeholders in ESA design
- Look at old problems in a new way
- Get out of silos
- Be wary of using values
- Building capacity and practical understanding
- May inform decision making but does not make the decisions for you
- Still have people, personalities and politics!



PANACHE

Protected Area Network Across
the Channel Ecosystem



Hampshire & Isle of Wight
Wildlife Trust
Protecting wildlife. Inspiring people.



**LIVE
SUSTAINABLY
WITH
PLYMOUTH
UNIVERSITY
MARINE INSTITUTE**



**MARINE &
COASTAL POLICY
WITH
PLYMOUTH
UNIVERSITY**

PML | Plymouth Marine
Laboratory



The VALMER and PANACHE projects were selected under the European cross-border cooperation programme INTERREG IV A France (Channel) - England, co-funded by the ERDF.